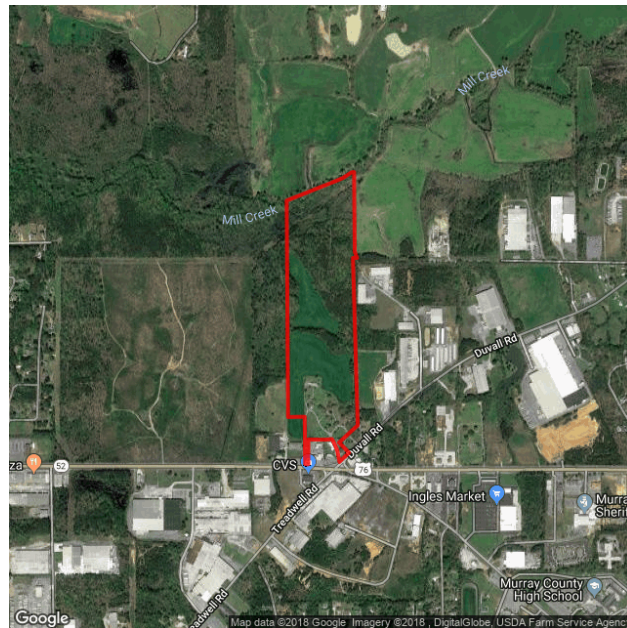


Duvall Property

Chatsworth, GA 30705
Murray County

Contact

Illya Copeland
Murray County Industrial
Development Authority
P.O. Box 1129
Chatsworth, GA 30705
Phone: 706-980-0621
Email:
illyac@murraycountyida.com



Property

Total Acres	65.8 acres
Remaining Acres	65.8 acres
Largest Tract	65.8 acres
GRAD Site	No
Rail Served	No

Incentives

Jobs Tax Credit	\$4000/job
Investment Tax Credit	5%
Opportunity Zone	No
Less Developed Census Tract	No

Utilities

Water On Site	Yes
Sewer On Site	Yes
Gas On Site	Yes
Electric Provider	Georgia Power

Transportation

Nearest Interstate	I-75
Distance to Interstate	11 miles
Nearest Port 1	Port of Savannah
Distance to Port 1	280 miles
Nearest Port 2	Port of Charleston
Distance to Port 2	312 miles
Nearest International Airport	Hartsfield-Jackson Atlanta International
Distance to International Airport	82 miles

