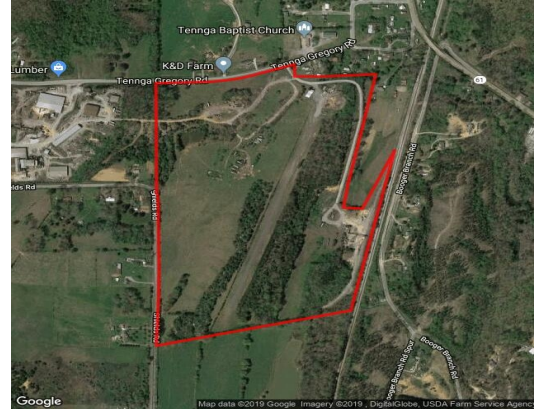


Sutton Rail Site

Tenna, GA 30711
Murray County

Contact

Georgia Power Community & Economic Development
Phone: 404-506-3733
Email: econdevga@southernco.com
www.SelectGeorgia.com



Property

Largest Tract: 90
Remaining Acres: 90
Total Acres: 90
Sale or Lease: Sale
GRAD Site: No
Zoning: Agricultural

Workforce

County Laborforce:¹ 15,820
County Average Weekly Wage: \$672
County Unemployment Rate: 4.5%

Incentives

Jobs Tax Credit: \$4000 / job
Investment Tax Credit: 5%
City Freeport Category 1,2,3,4: , , ,
County Freeport Category 1,2,3,4: 100%,100%,100%,0%
Opportunity Zone: No
Federal Opp. Zone: No
Less Developed Census Tract: No
Military Zone: No
Foreign Trade Zone: No

Utilities

Water On Site: Yes
Water Main Size: 6 inches
Sewer On Site: No
Sewer Main Size: 8 inches
Gas On Site: No
Gas Main Size: 4 inches
Electric Provider: North Georgia EMC

Taxes

Effective Property Tax: \$9.88 per thousand dollars FMV
Millage Rate: 24.69
Sales Tax: 7%

Transportation

Nearest International Airport: Hartsfield-Jackson Atlanta International, 93.8 miles
Nearest Interstate: 75, 16.3 miles
Nearest Port 1: Port of Savannah, 303.3 miles
Nearest Port 2: Port of Charleston, 314.8 miles
Nearest Intermodal: Appalachian Regional Inland Port, 2.5 miles
Rail Served: Yes
Rail Provider: CSX Transportation

¹ Monthly workforce data from the Georgia Department of Labor